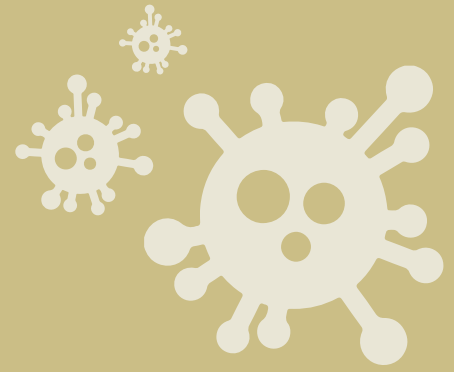


HUMAN WELLBEING

Combating cholera



Teacher Notes

Syllabus Topic: Stage 5: Human Wellbeing

Sub-topic: Human wellbeing and development & Spatial variations in human wellbeing

Syllabus Outcomes: A student:

- explains the diverse features and characteristics of a range of places and environments **GE5-1**
- explains processes and influences that form and transform places and environments **GE5-2**
- analyses the effect of interactions and connections between people, places and environments **GE5-3**
- communicates geographical information to a range of audiences using a variety of strategies **GE5-8**

Syllabus Content:

Human wellbeing and development

- analysis of contemporary trends in human wellbeing and development

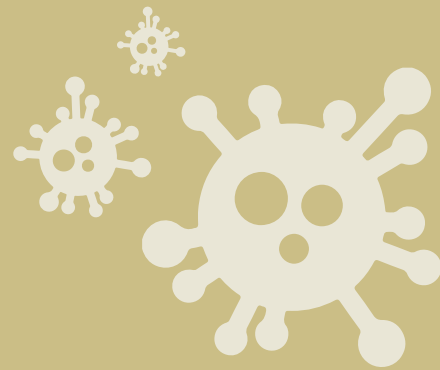
Spatial variations in human wellbeing

- investigate causes, issues and consequences of spatial variations in human wellbeing
- description of spatial variations in human wellbeing and development between and within countries using selected indicators

Learning Intention: For students to investigate trends, causes and consequences of the key wellbeing indicator of health, focusing on the preventable disease cholera.

HUMAN WELLBEING

Combating cholera



Teacher Notes

OPTIONAL STARTER ACTIVITY: **CONTAMINATION STATION GAME**

- The teacher will add glitter to a bowl of clean water and stir it in. The teacher explains that this is the only water source available and the class are going to perform some daily tasks.
- The teacher asks some students to dip their hands into the water as if they are washing them. Another group are to wash plates in the water. The final group fills the cups as if to drink them. The class is then asked to observe whether they have collected any of the glitter from the water on their hands or equipment.
- The teacher then explains that the glitter represents *Vibrio cholerae* bacteria – the germs that cause the disease cholera. The bacteria spreads easily by making its way from faecal matter to a source of food or water and then into someone's stomach. If not treated quickly it can lead to severe illness and possibly death.
- Suggest the class might want to wash their hands of faecal matter before they continue!

EQUIPMENT NEEDED:

- glitter
- a washing up bowl or similar filled with water
- some cups and plates
- access to a sink
- towels for washing hands afterwards.

